

WM-FTB-24 Wall Mount Fiber Optic Terminal Box

1. Product Definition

Fiber optic patch panel is applicable to connect the various direct or divergent type of indoor-outdoor optical cables and protects fiber-optic connectors as a service equipment of terminal wiring during the optical fiber transmission in communication network. Mainly used for fixing optical fiber cable termination, splicing optical cable & the pigtail and the storage and protection of residual fiber.

2. Typical Applications

Heavily used in local call, agrochemical network, data & image transport system, CATV and so on to connect the various direct or divergent type of indoor-outdoor optical cables for protection of connectors. At present, fiber optic terminal box is the main carriers of the transmission of information by making fiber hardware be the transmission media.

3. Main Technical Indexes

3.1 Working Conditions

- Working Temp. Range: $-25^{\circ}\text{C} \sim +40^{\circ}\text{C}$.
- Relative Humidity: $\leq 85\% \text{RH}(+30^{\circ}\text{C})$.
- Operating Altitude: $\leq 1000\text{m}$.
- Vertical Inclination: $\leq 5\%$.

3.2 Product Composition

Wall mounted fiber optic terminal box is composed of metal body、ODF unit and main components such as locks, seal rings etc.

3.3 Features

- ◆ Fiber optic terminal box can be divided into left and right parts both equipped locks, fiber fusion and distribution work independently.
- ◆ Plenty of inner space is favorable for trace, the storage and winder of fiber. The inlet holes on the bottom of the body, equipped with waterproof Nylon cable gland, can protect the optical cables.
- ◆ Type of installation: Wall mount or mast mount, indoor and outdoor two scenarios are adjustable for customers.
- ◆ Surface finish: Powder coating, custom color.
- ◆ Fiber trace diagram, sign plate, warning sign and so on are used right positions for convenient operations.
- ◆ Products have grounding protection device, please connect the grounding wire when using it.

4. Specification

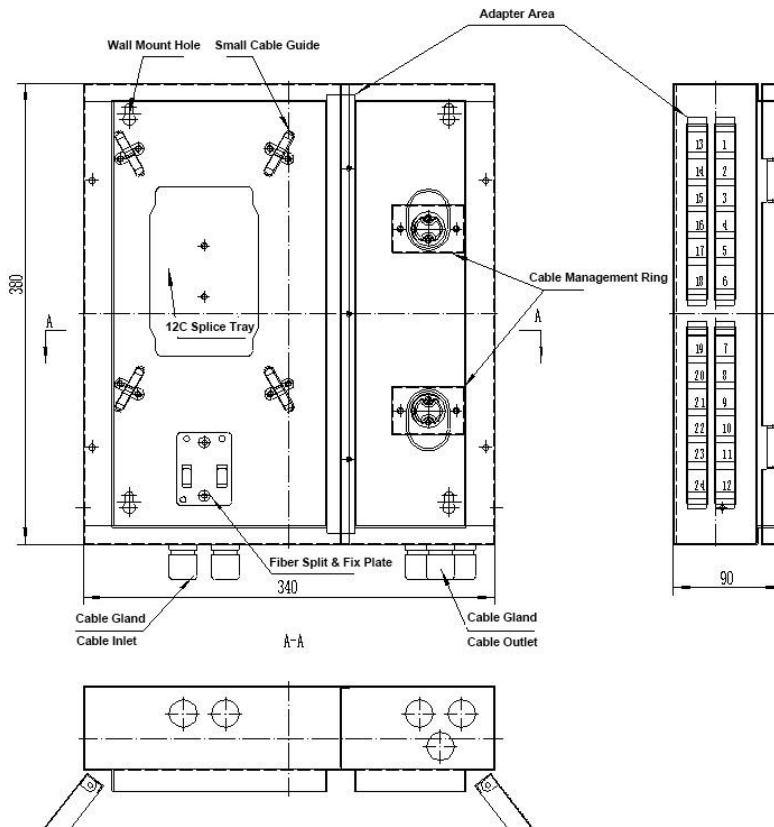
4.1 Model & Dimension

SN	Model	Dimension (H*W*D)	Body Material	Notes
1	WM-FTB-24	380mm*340mm*80mm	Metal	24 Ports

4.2 Product Configuration

SN	Model	Product Configuration
1	24 Ports Wall Mounted Fiber Optic Terminal box	<ol style="list-style-type: none"> 12cores fiber splicing tray 2pcs pigtail Length 3m 24pcs (SC/FC/LC options) Adapters 24pcs (SC/FC/LC options) 45mm protective sleeve 12pcs Fit accessories (wall & mast mounting options)

4.3 Solution Diagram (24 Ports Wall Mounted Fiber Optic Terminal box)



5. Installation & Usage

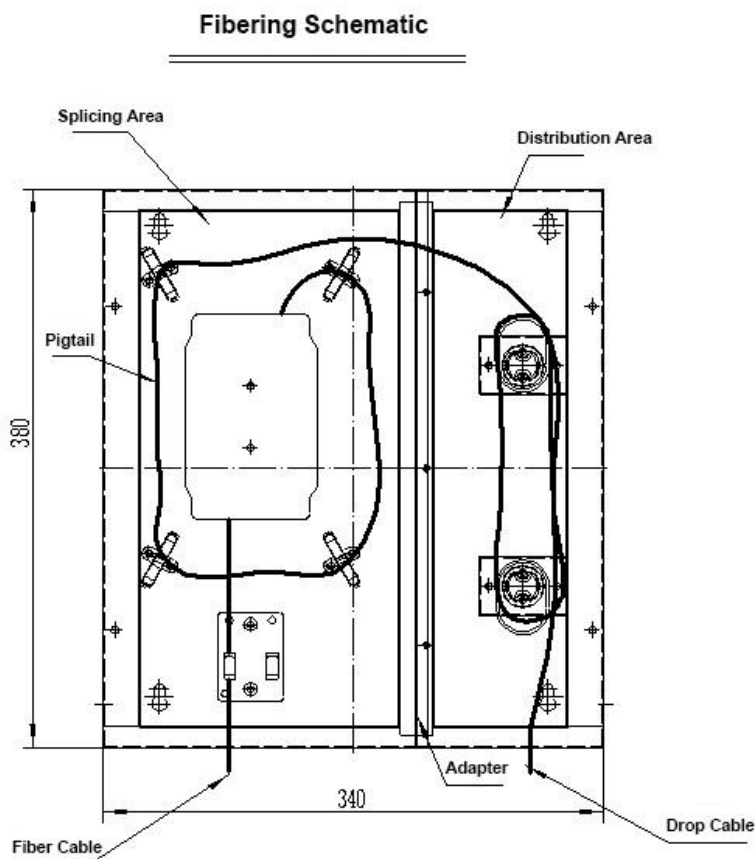
5.1 Installation

Fixing type of wall mounted fiber optic terminal box: Drill a round hole at the position of the wall to be fixed (the relative position is shown in the figure above), put the M6 expansion nut into it, then place the chassis in the corresponding position, and align the mounting holes of the chassis with each round hole, and finally put Insert the M6×50 screw and tighten it.

5.2 Usage

Product is composed of three regions as the left splicing region, middle adapter end region and right distribution region.

After the cable enters the box from the bottom of the left side, the cable is fixed on the fixed stripping unit, the cable strengthening core is fixed on the connecting post, the stripped fiber cable sleeve is fitted with a bare fiber protective tube, and the 12 core direct melt disc is fused with the single core tail fiber. After splicing, the end flange head is inserted into the left side of the intermediate adapter; the user cable is coiled into the distribution area from the right inlet and inserted into the right side of the intermediate adapter. See the figure below as follows:



5.3 Precautions



When the product is closed after using, the inside of it shall be clean and against dust into it. Fiber optic strength member shall be brought into earth after grounding.

6. Storage & Transportation

6.1 The products shall be stored in dry, well-ventilated and non-corrosive gas environment. Storage Temperature Range: $-25^{\circ}\text{C} \sim +40^{\circ}\text{C}$.

6.2 Products packed in cartons or wooden cases should be protected from the direct rain, snow, falls, collisions and sunlight exposure during transportation of highway, railway, water, air etc.

7. Accessory List

SN.	Model	Description	Unit	Quantity	Remarks	Image
1	FPG-SC/UPC S2.0-03	Pigtails 3m	Pcs	24		
2	FBFPT-10	Bare Fiber Protection Tube	Meters	2		
3	FHST-45	45mm Heat Shrink Tube	Pcs	24		
4	FCC-01	Cable Clamp	Pcs	2		
5	FAB-01	Anchor Bolt	Set	4		
6	FCT-01	Cable Tie	Pcs	10		